



2025 FOREST RIVER CHEROKEE WOLF PUP 16CMBL

\$25,992.00

Originally \$44,157.90

SPECIFICATIONS

Year	2025
Manufacturer	FOREST RIVER
Brand	CHEROKEE WOLF PUP
Model	16CMBL
Type	Travel Trailer
Status	New
Stock #	SY037966
Financing Available	✓
Warranty Available	✓
Suspension	N/A
Leveling	N/A
Exterior Length	23.8 ft.
Dry Weight	3801 lbs.
Sleeping Capacity	3 person(s)
Interior Colour	Denali
Exterior Colour	Aluminum
Slideouts	N/A

Disclaimer: Product information, pricing and photos are as accurate as possible and are subject to change without notice.

SELLING FEATURES

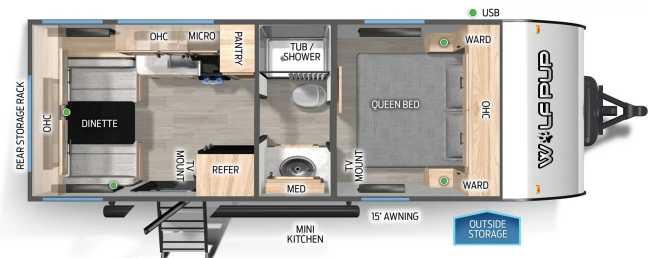
Specifications and Features:

- Length (ft): 23'10"
- Width (ft): 7'6"
- GVWR (lbs): 5526
- Dry Weight (lbs): 3801
- Payload Capacity (lbs): 1706
- Hitch Weight (lbs): 426
- Number Of Fresh Water Holding Tanks: 1
- Total Fresh Water Tank Capacity (gal): 26
- Number Of Gray Water Holding Tanks:...

OPTIONS & EQUIPMENT

Limited Package:

- 13.5K BTU Air Conditioner
- 20 000 BTU Furnace
- Premium Bedding and Comforter
- Night Shades
- LED Interior Lights
- 12 V High Efficiency 7.1 Cubic Foot Refrigerator with Travel Lock
- Upgraded Stainless Range Hood with Light and Fan
- Flush mount Range with Cover
- Seamless Countertop
- Inside and Outside Speakers
- USB-C Charging Stations
- Bedside Inverter
- Shower Tub Surround
- Exclusive Solar Thermo Controlled Reflective Tinted Safety Glass Windows
- Blackout Glass Safety Slam Friction Hinge Entry
- Door with Window and Shade Prep
- Cherokee Exclusive Stable Step with Oversized Landing
- Full Length Power Awning
- Exterior LED Light Strip at Awning
- Cherokee Backup Camera System
- Detachable Power Cord
- External Scare Light
- Outside Mini-Kitchen (Where Available)
- Outdoor Shower with Hot and Cold Water
- 12 Volt Tank Heaters
- Wolf Pup Quick Jack
- Four Stabilizer Jacks
- Spare Tire



- Tire Pressure Indicators
- Ladder Prep
- Tongue and Groove Plywood Flooring
- Power Gear Frame Technology and Space Saver Rail Design
- Seamless Roof Membrane with Heat Reflectivity
- Adventure Package: Aggressive Off-road Tires Diamond Plated Exterior & Lifted Frame

Advantage Package:

- Juice Pack: 200W Roof Mounted Solar Panel 30 Amp Solar Charger Volt Meter & Battery Disconnect
- 14" Tires for improved towing in place of 13
- 26" Wide Door IPO 22" Door
- Aerodynamic Smooth Radius Front Profile
- High Impact Front Metal IPO Corrugated Metal
- Exterior 110V Recept
- Large Exterior Folding Assist Handle
- Monitor Panel for Tanks and Battery Levels
- Outside Storage Door
- TV Antenna and Hookups
- RV Grill Quick Connect
- Roadside Assistance

Camping Package:

- 55 Amp Converter
- Tankless Water Heater
- Bathroom Fan
- Foot Flush Toilet
- High Flo Water Pump
- High Output Cooktop
- High Rise Faucet
- Large High Output Microwave
- Nitrogen Filled Tires
- One Piece Walkable Decked Roof
- Oversized Dinette and Removable Table

Safety Package:

???????

- Carbon Monoxide Detector
- Emergency Exit Windows
- Fire Extinguisher
- GFI Protective Outlet
- LP Gas Detector
- Safety Glass Windows
- Smoke Detector

Black Label Package:

???????

- Hung Fiberglass Gel Coat Sided Walls
- Frameless Window Package
- Thermo-Foil Arctic Insulation
- Upgraded Solid Surface Countertops
- Upgraded Reading Lights
- Designer Cushion Fabric