



## NIAGARA TRAILERS

rving@niagaratrailers.com 1-800-348-9653  
Box 153 1224 York Road, St Davids, ON L0S 1P0  
Local 1-905-262-4518 | Fax 1-905-262-4697 | www.niagaratrailers.com



## 2025 EAST TO WEST SILVER LAKE 1610BHLE

**\$30,900.00**

**\$146 Bi-Weekly**

### SPECIFICATIONS

Year	2025
Manufacturer	EAST TO WEST
Brand	SILVER LAKE
Model	1610BHLE
Type	Travel Trailer
Status	New
Stock #	FR1764
Financing Available	✓
Warranty Available	✓
Suspension	N/A
Leveling	N/A
Exterior Length	22.0 ft.
Dry Weight	4160 lbs.
Sleeping Capacity	7 person(s)
Interior Colour	STERLING SANDS
Exterior Colour	N/A
Slideouts	N/A

**Disclaimer:** Product information, pricing and photos are as accurate as possible and are subject to change without notice.

### SELLING FEATURES

#### ULTIMATE EXCURSION PACKAGE (Standard)

- 81" Interior Ceiling Height
- Solid Privacy Bedroom Door (W/A)
- Outside Shower With Hot & Cold Water
- Cable/Satellite Ready
- USB & C-Port Charging Stations (Beds, Bunks & Tables)
- Exterior LED Light Strip Under Awning
- Power Awning w/ Adjustable Le...

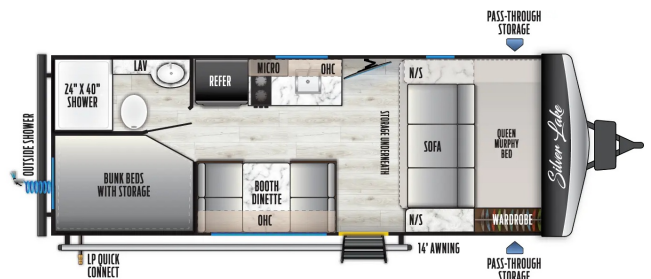
### OPTIONS & EQUIPMENT

#### INCLUDED OPTION:

- Spare Tire & Carrier

#### ALSO INCLUDES:

- Pre-delivery Inspection
- 10' Sewer Hose with adapter
- Deep Cycle RV Battery
- Propane Tank(s)
- Electrical Adapter
- 25' Water Hose
- RVIA/QAI/Canadian Standard



Powered by focusRV