



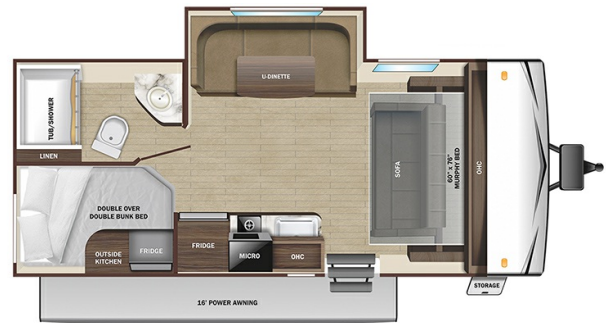
## 2025 STARCRAFT AUTUMN RIDGE SINGLE AXLE 188BHSW

**\$24,992.00**

Originally \$32,687.00

### SPECIFICATIONS

Year	2025
Manufacturer	STARCRAFT
Brand	AUTUMN RIDGE SINGLE AXLE
Model	188BHSW
Type	Travel Trailer
Status	New
Stock #	S7B35092
Financing Available	✓
Warranty Available	✓
Suspension	N/A
Leveling	N/A
Exterior Length	23.8 ft.
Dry Weight	4245 lbs.
Sleeping Capacity	8 person(s)
Interior Colour	N/A
Exterior Colour	Aluminum
Slideouts	1



**Disclaimer:** Product information, pricing and photos are as accurate as possible and are subject to change without notice.

### SELLING FEATURES

Specifications and Features:

- Length (ft): 23'10"
- Width (ft): 8'0"
- Height (ft): 10'7"
- Interior Height (ft): 6'9"
- GVWR (lbs): 5300
- Dry Weight (lbs): 4245
- Payload Capacity (lbs): 1055
- Hitch Weight (lbs): 600
- Number Of Fresh Water Holding Tanks: 1
- Total Fresh Water Tank Capacity...

### OPTIONS & EQUIPMENT

Standard Features and Options

#### Standard Exterior Equipment

- 120 GFCI protected receptacle
- 5/8" main floor decking
- 96" exterior width
- Black front diamond plate protection
- Detachable power cords
- Exterior docking center (dual axle models)
- Fiberglass insulation
- Flexible LP lines
- Galvanized wheel wells
- Grab handle
- In-frame battery rack
- Magnetic baggage door catches
- Magnum Roof™ system
- PVC Roofing Membrane (limited lifetime warranty)
- Rain guttering with molded drip spouts
- Rear camera prep
- Safety bumper with drain hose carrier and end caps
- Self-adjusting electric brakes and E-Z Lube® axles
- Thermal Seal- enclosed insulated and heated underbelly and fully insulated roof with a PVC Roofing Membrane (dual axle models)
- Tinted safety-glass windows throughout

#### Standard Interior Equipment

- 8 cu. ft. 12V refrigerator
- 75 lb. ball bearing drawer guides
- 81" interior height
- Ceiling mount bluetooth speaker
- Flush floor slides with residential vinyl flooring
- Foot flush toilet
- Hidden hinge cabinet door hinges
- LED interior lighting
- Magnet cabinet catches
- Pleated blackout night shades
- Pocket-screwed lumbercore cabinet construction
- Pressed membrane kitchen countertops
- Range hood
- Residential high-rise kitchen faucet
- Single basin under-mount kitchen sink
- Solid hardwood cabinet doors
- Solid hardwood drawer fronts
- Storage below main bed
- USB charging port at beds and bunks

### **Customer Convenience Package (Mandatory)**

- 13 500 BTU roof mounted A/C
- 17" oven (dual axle models)
- 2-burner range with glass cover (single axle models)
- 3-burner range with glass cover (dual axle models)
- Dome style digital TV antenna
- Friction hinge entrance door with window and shade prep
- Gas/electric water heater
- Microwave
- Nitrogen filled radial tires
- Powered awning with LED lighting
- Powered bathroom vent
- Residential vinyl flooring throughout
- Solid swing down step (main)
- Stabilizer jacks (4-dual axle models 2-single axle models)
- Water heater bypass
- Xtend Solar I Package (200 watt solar panel with 30 amp controller)

### **Customer Value Package - AR-One**

- 13 500 BTU roof mounted A/C
- 19 000 BTU furnace
- 2 burner stove top
- Bathroom vent
- Detachable power cord
- Entry door with window and shade prep
- GE 4.4 cu. ft. 110V refrigerator
- G20 dark tinted privacy windows
- LED interior and exterior lights
- Microwave oven
- Stabilizer jacks
- Window shades

Powered by focusRV