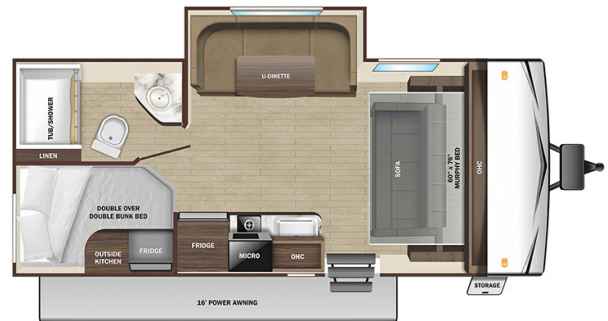




2025 HIGHLAND RIDGE OPEN RANGE CONVENTIONAL 188BHSW

SPECIFICATIONS

| | |
|---------------------|-------------------------|
| Year | 2025 |
| Manufacturer | HIGHLAND RIDGE |
| Brand | OPEN RANGE CONVENTIONAL |
| Model | 188BHSW |
| Type | Travel Trailer |
| Status | New |
| Stock # | PT409 |
| Financing Available | ✘ |
| Warranty Available | ✘ |
| Suspension | N/A |
| Leveling | N/A |
| Exterior Length | 23.8 ft. |
| Dry Weight | 4245 lbs. |
| Sleeping Capacity | 8 person(s) |
| Interior Colour | N/A |
| Exterior Colour | Fiberglass |
| Slideouts | 1 |



Disclaimer: Product information, pricing and photos are as accurate as possible and are subject to change without notice.

SELLING FEATURES

Specifications and Features:

- Length (ft): 23'10"
- Width (ft): 8'0"
- Height (ft): 10'7"
- Interior Height (ft): 6'9"
- GVWR (lbs): 5300
- Dry Weight (lbs): 4245
- Payload Capacity (lbs): 1055
- Hitch Weight (lbs): 600
- Number Of Fresh Water Holding Tanks: 1
- Total Fresh Water Tank Capacity: 30

OPTIONS & EQUIPMENT

- AUDIO & COMMUNICATION
- PAINT & FINISH
- EXTERIOR
- IDENTIFICATION
- PAINT & FINISH
- SPECIAL PACKAGE
- WHEELS & TIRES

Powered by focusRV