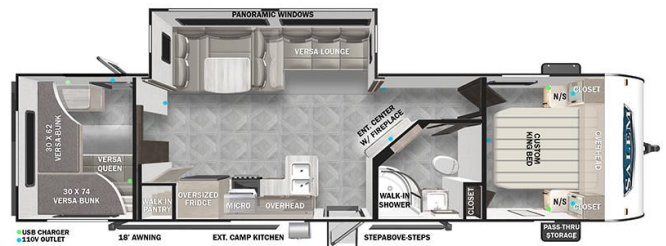




## 2024 FOREST RIVER SALEM 29VBUD

### SPECIFICATIONS

Year	2024
Manufacturer	FOREST RIVER
Brand	SALEM
Model	29VBUD
Type	Travel Trailer
Status	New
Stock #	337427
Financing Available	✓
Warranty Available	✓
Suspension	N/A
Leveling	N/A
Exterior Length	34.2 ft.
Dry Weight	7982 lbs.
Sleeping Capacity	10 person(s)
Interior Colour	N/A
Exterior Colour	Fiberglass
Slideouts	1



**Disclaimer:** Product information, pricing and photos are as accurate as possible and are subject to change without notice.

### SELLING FEATURES

The 29VBUD is ready to impress with versatile bunkhouse and lots of space!

Features:

- **Best in Class Value Package:** Versa-Tilt Bed, 200W Solar Panel w/30 Amp Controller, Upgraded Designer Furniture Package, 20.3 CU FT of Stow N Go Storage, Versa Lounge (Select Models), MORryde™ StepAbove Double Step (Main Door Only), Exterior LED Light Strip Under Awning, Modern Cloth Roller Shades w/ AutoStop, Green Pkg: Roof Mount Solar Prep & LED Mushroom Lights, Power Awning w/ Adjustable Legs, Quick Drop Stabilizer Jacks, Power Tongue Jack w/ LED Light, Stainless Steel Roll Up Sink Cover, Ext. Convenience PKG: Friction Hinge & Baggage Door Magnets, Furion Backup Camera Prep, Large Capacity 11 CU FT Frost-Free Refrigerator (12-volt, Slide-Out Awning Prep, Black Tank Flush, Seamless Countertops (No T-Mold), Designated CPAP Storage
- Sleeps up to 10- front custom king bed, rear bunkroom that sleeps four, and a versa lounge that folds down to a bed
- Kitchen includes stainless steel fridge/freezer, microwave, and range/oven
- Outside kitchen with griddle and mini bar fridge
- Bathroom includes shower, vanity, toilet, and skylight
- Entertainment center with stereo, TV hookups, fireplace and indoor/outdoor speakers
- Spare tire, carrier, and cover
- Includes deep cycle marine battery and propane tanks
- Full manufacturer's warranty
- Dry weight of 7,982lbs

No hidden fees (freight, PDI, licensing, admin, or battery fee). Simply add the HST! Financing available.

### OPTIONS & EQUIPMENT

- Pre-delivery Inspection
- Deep Cycle RV Battery
- Propane Tank(s)
- Licensing Completed
- Electrical Adaptor
- 25' Water Hose
- 10' Sewer Hose
- Thorough Walkthrough