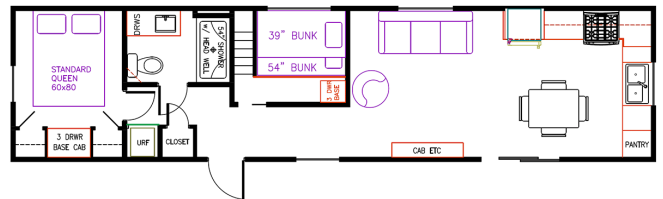




2024 ELEVATION PARK MODEL 3-106CA

SPECIFICATIONS

Year	2024
Manufacturer	ELEVATION
Brand	PARK MODEL
Model	3-106CA
Type	Park Model
Status	New
Stock #	683180
Financing Available	✓
Warranty Available	✓
Suspension	N/A
Leveling	N/A
Exterior Length	45.0 ft.
Dry Weight	19000 lbs.
Sleeping Capacity	7 person(s)
Interior Colour	N/A
Exterior Colour	Vinyl Siding
Slideouts	N/A



Disclaimer: Product information, pricing and photos are as accurate as possible and are subject to change without notice.

SELLING FEATURES

Modern park model with spacious living area and two bedrooms!

- Sleeps up to 7- rear queen bedroom and separate bunkroom with single over double bunks
- Kitchen includes residential fridge and stove, microwave, lots of cabinets and large sink
- Dining table with four chairs
- Spacious living room complete with sofa and chair
- Entertainment space with TV and storage cabinet
- Bathroom with stand up shower, vanity and toilet
- Two door entrance
- Manufacturer's warranty
- Delivery and set up available!

Construction:

- Architectural Shingles - 40 Year Warranty
- 7/16" OSB Roof Decking
- 2x6 Perimeter Fascia
- Engineered Truss Rafters 16" o.c.
- Fixed Roof Overhangs
- Woven Poly Underbelly
- Vinyl Siding w/50 Year Warranty
- Fiberglass Insulation: R-11 Sidewalls, R-11 Floors, & R-19 Roof
- Weather resistant Thermo-Sheathing
- Metal Strapping Connecting Sidewalls to Floor
- 2x4 Sidewall Studs 16" o.c.
- 10" Steel I-Beam Frame
- 2x6 Floor joists 16" o.c.
- Floor ductwork w/ center registers
- 5/8" Decking w/ water sealant
- 6' Vinyl Patio Door
- Vinyl Thermopane Windows w/ Argon
- Shed Dormers Entire Length
- Removable Hitch
- Metal Hurricane Straps

Standard Features:

- 50 Amp Electrical cord (36')
- Prep for Central Air
- Suburban 40,000 BTU Furnace
- 20-gallon electric W/H w/ lighted switch
- 18' GE Refrigerator w/ top freezer - Black

- 30" GE Gas Range – Black
- 30" Over the Range Microwave – Black
- Stainless Steel Deep Kitchen Sink
- Pull down spray kitchen faucet
- Wood Table w/ Chairs (Black or White)
- Black or Brushed Nickel hardware
- Custom high-end residential cabinetry
- Toe Kicks in Cabinetry
- Raised Panel Solid core Interior Doors
- Cordless 2" Blinds
- LED can lights throughout
- Ceiling Fan w/Light – LR (BRM non loft only)
- 60 x 80 Standard Queen premium mattress
- 2 Night Stands in Bedroom
- Master BRM wardrobes w/ drawer bank
- Barrel Chair
- Hide a bed sofa
- Fiberglass Tub or Shower w/ fiberglass headwell
- Single Lever Bathroom Faucet
- Stainless Steel Bathroom Sink
- Residential House Toilet
- Power bathroom vent
- TV Jack in LR, BRM & Loft
- USB outlets in Kitchen, Bedroom, & Loft
- Porch Lights by Each Door
- Exterior 110 GFI outlet
- Fire Extinguisher
- Smoke & CO2 Detector

Upgraded Options:

- 56,000 BTU Furnace
- Lift Up Bed Box
- Galvanized Metal Underbelly
- Sofa Style Queen Hide a Bed
- Smart LED TV 55"
- Stainless Steel Appliances
- Cabinet Crown
- Shower/Tub Door Nickel
- Toilet - Elongated

No hidden fees (freight, PDI, licencing, admin, or battery fee). Simply add the HST! Financing available.

OPTIONS & EQUIPMENT

- Pre-delivery Inspection
- Thorough Walkthrough

Powered by focusRV