



## CLEARANCE UNIT

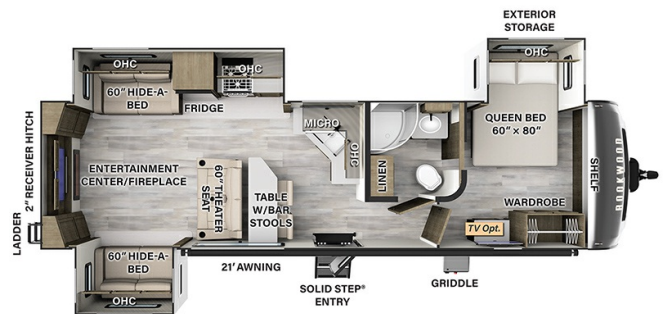
# \$45,992.00

Originally \$69,432.00

## 2024 FOREST RIVER ROCKWOOD ULTRA LITE 2908RL

### SPECIFICATIONS

Year	2024
Manufacturer	FOREST RIVER
Brand	ROCKWOOD ULTRA LITE
Model	2908RL
Type	Travel Trailer
Status	New
Stock #	RZ191269
Financing Available	✓
Warranty Available	✓
Suspension	N/A
Leveling	N/A
Exterior Length	35.4 ft.
Dry Weight	8284 lbs.
Sleeping Capacity	6 person(s)
Interior Colour	N/A
Exterior Colour	Fiberglass
Slideouts	3



**Disclaimer:** Product information, pricing and photos are as accurate as possible and are subject to change without notice.

### SELLING FEATURES

#### Specifications and Features:

- Length (ft): 35'5"
- Width (ft): 8'0"
- Height (ft): 11'2"
- GVWR (lbs): 9730
- Dry Weight (lbs): 8284
- Payload Capacity (lbs): 1446
- Hitch Weight (lbs): 930
- Number Of Fresh Water Holding Tanks: 1
- Total Fresh Water Tank Capacity (gal): 54
- Number Of Gray ...

### OPTIONS & EQUIPMENT

#### Exterior Features:

- High Gloss Front Cap
- Power Awning w/ Adjustable Rain Dump & LED Lighting
- Tinted Frameless Windows
- Slam Latches & Magnetic Compartment Door Catches
- Cable & Satellite Hookup
- Exterior Battery Disconnect Switch
- Side Solar Prep
- Outside Griddle w/ LP Hook Up
- Friction Hinge Entrance Door with Window Shade & ScreenShot Screen Door
- Large Foldable Grab Handles (All Entrance Doors)
- Outside Antifreeze Station
- Black Tank Flush
- 360 Siphon Vent Cap On All Black Tanks
- Solid Entry Strut Assist Fold Out Entry Steps
- Outside Speakers
- Keyed Alike Locks
- Power Stabilizer Jacks
- Automotive Windshield
- Rear Ladder
- 2" Accessory Hitch
- Laminated White Fiberglass Sidewalls
- 200W Roof Solar Panel with 1800W Inverter

- Outside Spray Port
- AIR 360+ OMNIDIRECTIONAL ANTENNA / WITH WIFI PREP

### Interior Features:

- Autumn Wood Cabinetry
- Screwed & Glued Solid Wood Cabinet Doors & Drawers With Hidden Hinges Metal Drawer Glides & Residential Hardware
- 35K BTU Furnace
- Carbon Monoxide Detector
- Interior 12V USB Outlet
- OneControl Panel with WeRV App Control
- 55 AMP Converter with Charger
- Ceiling LED 12V Interior Lighting
- Quick Recovery Water Heater w/ Interior Gas/Electric Switches
- 50 Amp Service and Digital Dual Thermostat Control
- 15 000 BTU Ducted Air Conditioner
- Sedona Wood Cabinetry
- Night Roller Shade

### Living Area Features:

- Deluxe Theater Seating
- Multi Zone Sound Bar/Stereo Combo w/AM/FM & Bluetooth Control
- Marine Grade Carpet in slides
- Smart TVs
- Fireplace (N/A 2616BH 2911BS)

### Bedroom features:

- Large Wardrobe or Wardrobe Slide
- Designer Bedding
- Optional Smart Bedroom TV
- King Bed Optional (2720IK 2906BS)

### Construction Features:

- 6 Sided Aluminum Framed (Side Walls End Wall Front Floor & Roof)
- 5/8" Plywood Tongue & Groove Subfloor
- Insulation Factors R-7 Side Wall R-12 Floor & R-14 Ceiling
- Radiant Foil Insulated Underbelly & Slide Out Floors
- Enclosed Underbelly
- Electronically Controlled Heated Holding Tanks
- Radius Roof w/ Interior Vaulted Ceilings
- Vinyl/Rubber Composite Roofing Membrane
- Vacuum Laminated One Piece Roof & Walls
- Aluminum Cage Dinette & Bed Base

### Towing Features:

- Rear Observation Camera Prep w/ Molded Mounting Plate
- Easy Lube Axles & Nev-R Adjust Brakes
- Torsion Axle Rubber-Ryde Suspension
- Spare Tire w/ Carrier & Cover
- Power Tongue Jack
- Nitrogen Filled Goodyear Endurance Tires w/ Polished Alloy Wheels
- TST Tire Pressure Monitor System w/ Monitor
- 2 5/16" Ball

### Kitchen Features:

- Three Burner High Output Gas Range with Flush Mount Glass Top Cover
- 21" Gas Oven
- Microwave Oven
- Solid Surface Kitchen Countertops
- Designer Kitchen Backsplash
- 12V Refrigerator
- Under mount Single Basin Kitchen Sink w/ Residential Style Faucet
- Water Filter Supplied

### Bathroom Features:

- Showermiser Water Saving System
- Bathroom Skylight
- Foot Flush Toilets
- Maxxair Ventilation Fan & Cover
- Water Heater By-Pass Kit

Powered by focusRV