

**CASCADE**

sales@towtallycamping.com 1-530-241-7848

2425 Cascade Blvd., Redding, CA 96003

Local 1-530-241-7848 | <https://www.towtallycamping.com/>**CLEARANCE UNIT****\$36,492.00**

Originally \$54,723.00

2024 FOREST RIVER ROCKWOOD MINI LITE 2518S**SPECIFICATIONS**

Year	2024
Manufacturer	FOREST RIVER
Brand	ROCKWOOD MINI LITE
Model	2518S
Type	Travel Trailer
Status	New
Stock #	RD457475
Financing Available	✓
Warranty Available	✓
Suspension	N/A
Leveling	N/A
Exterior Length	25.8 ft.
Dry Weight	5619 lbs.
Sleeping Capacity	4 person(s)
Interior Colour	N/A
Exterior Colour	Fiberglass
Slideouts	2

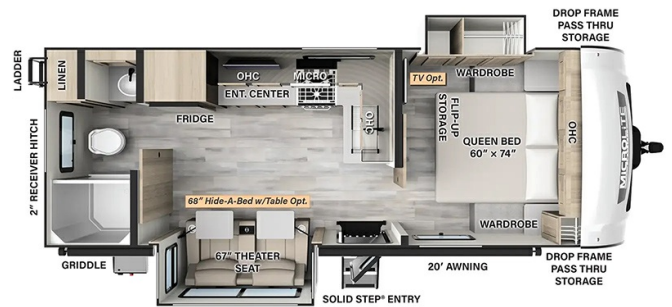
Disclaimer: Product information, pricing and photos are as accurate as possible and are subject to change without notice.

SELLING FEATURES**Specifications and Features:**

- Length (ft): 25'10"
- Width (ft): 8'0"
- Height (ft): 10'11"
- GVWR (lbs): 7645
- Dry Weight (lbs): 5619
- Payload Capacity (lbs): 2026
- Hitch Weight (lbs): 645
- Number Of Fresh Water Holding Tanks: 1
- Total Fresh Water Tank Capacity (gal): 54
- Number Of Gra...

OPTIONS & EQUIPMENT**Exterior Features:**

- Power Awning w/ Adjustable Rain Dump & LED Lighting
- Tinted Frameless Windows
- Magnetic Compartment Door Catches
- Exterior Battery Disconnect Switch
- Cable & Satellite Hookup
- Side Solar Prep
- Outside Griddle w/ LP Hook Up
- Friction Hinge Entrance Door with Window Shade & ScreenShot Screen Door
- Large Foldable Grab Handles (All Entrance Doors)
- Outside Antifreeze Station
- Black Tank Flush
- 360 Siphon Vent Cap On All Black Tanks
- Solid Entry Strut Assist Fold Out Entry Steps (N/A 2109S)
- Power Tongue Jack
- Outside Speakers
- Keyed Alike Locks
- Rear Ladder
- Two 30lb Gas Bottles w/ Molded Bottle Cover
- Molded Fiberglass Front Cap w/ Automotive Windshield
- 4 Frame Mounted Manual Stabilizer Jacks
- 2" Accessory Hitch
- 15 000 BTU A/C



- Laminated Clay with Alloy Band Fiberglass Sidewalls
- 200W Roof Solar Panel with 1800W Inverter
- Outside Spray Port
- AIR 360+ OMNIDIRECTIONAL ANTENNA / WITH WIFI PREP

Interior Features:

- Screwed & Glued Solid Wood Cabinet Doors & Drawers With Hidden Hinges Metal Drawer Glides & Residential Hardware
- Carbon Monoxide Detector
- Interior 12V Outlet
- Monitor Panel Switch Station with OneControl App
- 55 AMP Converter with Charger
- Ceiling LED 12V Interior Lighting
- Showermiser Water Saving System
- Bathroom Skylight
- Water Heater By-Pass Kit
- Foot Flush Toilets
- Maxxair Ventilation Fan & Cover
- Quick Recovery Water Heater w/ Interior Gas/Electric Switches
- 20K BTU Furnace on 2104S/2109S & 35K BTU on all others
- Night Roller Shades
- 15 000 BTU Ducted Air Conditioner
- Hybrid Woven Flooring In Slide Outs
- Sedona Wood Cabinetry
- 12V Smart Entertainment TV w/stereo

Construction Features:

- Aluminum Cage Dinette & Bed Base
- 6 Sided Aluminum Framed (Side Walls End Wall Front Floor & Roof)
- 5/8" Plywood Tongue & Groove Subfloor
- Insulation Factors R-7 Side Wall R-12 Floor & R-14 Ceiling
- Radiant Foil Insulated Underbelly & Slide Out Floors
- Enclosed Underbelly
- Electronically Controlled Heated Holding Tanks
- Radius Roof w/ Interior Vaulted Ceilings
- Vinyl/Rubber Composite Roofing Membrane
- Vacuum Laminated One Piece Roof & Walls
- Interior & Exterior Composite Sidewall Construction

Towing Features:

- Rear Observation Camera Prep w/ Molded Mounting Plate
- Easy Lube Axles & Nev-R Adjust Brakes
- Torsion Axle Rubber-Ryde Suspension
- Nitrogen Filled Goodyear Endurance Tires w/ Polished Alloy Wheels
- TST Tire Pressure Monitor System w/ Monitor
- Spare Tire w/ Carrier & Cover
- 2 5/16" Ball

Kitchen Features:

- Three Burner High Output Gas Range with Flush Mount Glass Top Cover
- 21" Gas Oven
- Microwave Oven
- 12V Refrigerator
- Sink Covers
- Solid Surface Kitchen Countertops
- Water Filter Supplied
- Under Mount Single Bowl Kitchen Sink w/ Residential Style Faucet

Bathroom Features:

- Showermiser Water Saving System
- Bathroom Skylight
- Water Heater By-Pass Kit
- Foot Flush Toilets
- Maxxair Ventilation Fan & Cover

???????