



**SPECIAL UNIT**

**\$163,995.00**

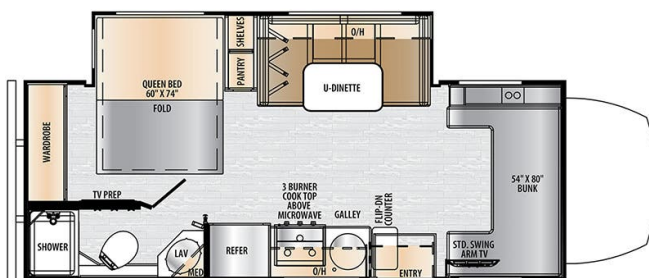
Originally \$246,994

**\$393 Weekly**

**2024 FOREST RIVER EAST TO WEST ENTRADA 24FM**

**SPECIFICATIONS**

|                     |                      |
|---------------------|----------------------|
| Year                | 2024                 |
| Manufacturer        | FOREST RIVER         |
| Brand               | EAST TO WEST ENTRADA |
| Model               | 24FM                 |
| Type                | Motorhome            |
| Class               | C                    |
| Fuel Type           | N/A                  |
| Status              | New                  |
| Stock #             | I1194                |
| Financing Available | ✓                    |
| Warranty Available  | ✓                    |
| Odometer            | 1264 kms.            |
| VIN                 | N/A                  |
| Chassis             | N/A                  |
| Engine              | N/A                  |
| Transmission        | N/A                  |
| Suspension          | N/A                  |
| Leveling            | N/A                  |
| Exterior Length     | 25.7 ft.             |
| Dry Weight          | 9243 lbs.            |
| Sleeping Capacity   | 6 person(s)          |
| Interior Colour     | N/A                  |
| Exterior Colour     | N/A                  |
| Slideouts           | 1                    |



**Disclaimer:** Product information, pricing and photos are as accurate as possible and are subject to change without notice.

**SELLING FEATURES**

Are you searching for your perfect motorhome then look no further, introducing, the East to West Entrada 24FM. With features such as Mercedes 3.0L V6 turbo diesel engine, active brake assist, automatic 7G - Tronic transmission, voice command, steering wheel integration and Mercedes navigation sys...

**OPTIONS & EQUIPMENT**

|                |                         |                     |                         |                          |                            |   |
|----------------|-------------------------|---------------------|-------------------------|--------------------------|----------------------------|---|
| Awning         | Aluminum Wheels         | Fridge with 2 doors | Heating                 | Air Bags                 | Air Conditioning (Dash)    | 1 Air Conditioning Unit(s) (Roof) - Size: 15000 |
| AM/FM CD       | Aux Battery             | Battery Charger     | Battery Tray            | Cruise Control           | Solid Surface Counter Tops |   |
| Dual Wheels    | Enclosed Underbelly     | Fully Furnished     | 4000w Propane Generator | Heated Tanks             | Hide A Bed                 |   |
| Inverter       | Island Bed              | Stabilizer Jacks    | LPG Detector            | Microwave                | Convection Oven            |   |
| Monitor Panel  | Navigation System (GPS) | Power Air Vents     | Power Bath Vents        | Power Seats              | Sky Light(s)               |   |
| Smoke Detector | Solar Panel             | Spare with Carrier  | 1 Televisions           | Gas (dsi) Water Heater 6 | Winterizing                |   |