



BILL THOMAS CAMPER SALES

onlinesales@btcamper.com 1-636-327-5900
101 Thomas RV Way, Wentzville, MO 63385
Local 1-636-327-5900 | <https://www.btcamper.com>



SPECIAL UNIT

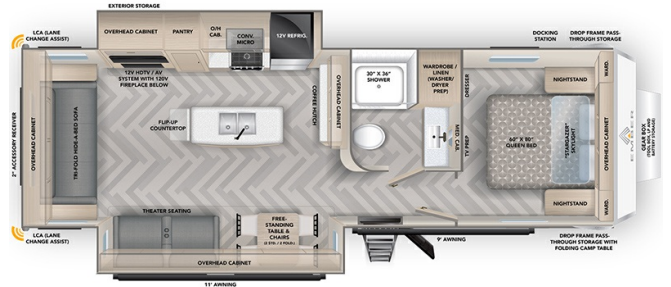
\$56,427.00

Originally \$63,317

2024 EMBER TOURING EDITION 29RS

SPECIFICATIONS

Year	2024
Manufacturer	EMBER
Brand	TOURING EDITION
Model	29RS
Type	Travel Trailer
Status	New
Stock #	12422
Financing Available	✓
Warranty Available	✓
Suspension	N/A
Leveling	N/A
Exterior Length	35.8 ft.
Dry Weight	7995 lbs.
Sleeping Capacity	4 person(s)
Interior Colour	N/A
Exterior Colour	Fiberglass
Slideouts	2



Disclaimer: Product information, pricing and photos are as accurate as possible and are subject to change without notice.

SELLING FEATURES

Specifications and Features:

- Length (ft): 35'10"
- Width (ft): 8'0"
- Height (ft): 11'8"
- GVWR (lbs): 9495
- Dry Weight (lbs): 7995
- Payload Capacity (lbs): 1500
- Hitch Weight (lbs): 935
- Number Of Fresh Water Holding Tanks: 1
- Total Fresh Water Tank Capacity (gal): 55
- Number Of Gray...

OPTIONS & EQUIPMENT

- INTERIOR DESIGN - COVERDALE
- LUXURY PACKAGE - MANDATORY
- TOURING PACKAGE - MANDATORY
- EURO WINDOW PACKAGE - MANDATORY
- SAFETY FIRST PACKAGE - MANDATORY
- ELECTRIC FIREPLACE - MANDATORY
- 2ND DQ SOFT-START 15K BTU AC: 28BH/28MBH, 29RS/29MRS
- ALUMINUM GEAR BOX (LP/BATTERY STORAGE & TOOL BOX) - MANDATORY
- CUB LANE CHANGE ASSISTANCE SYSTEM - MANDATORY
- OFF-GRID SOLAR PACKAGE - MANDATORY
- RVIA
- FREIGHT

Powered by focusRV