



**GREAT ESCAPE RV**

justin@greatescapervcanada.com 1-888-716-4542

RR42 - 24265 Richmond St. N, LONDON, ON N5X 4B2

Local 1-519-227-4700 | Fax 1-519-227-4788 | www.greatescapervcanada.com



## 2024 K-Z INC. Connect SE 261BHSE

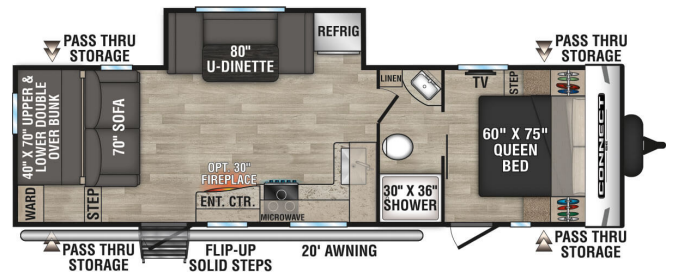
**\$44,995.00**

Originally \$60,595.00

**\$264 Bi-Weekly**

### SPECIFICATIONS

Year	2024
Manufacturer	K-Z INC.
Brand	Connect SE
Model	261BHSE
Type	Travel Trailer
Status	New
Stock #	N1313
Financing Available	✓
Warranty Available	✓
Suspension	N/A
Leveling	Manual
Exterior Length	32.9 ft.
Dry Weight	5350 lbs.
Sleeping Capacity	9 person(s)
Interior Colour	Ashwood
Exterior Colour	Fiberglass
Slideouts	1



**Disclaimer:** Product information, pricing and photos are as accurate as possible and are subject to change without notice.

### SELLING FEATURES

Connect SE is the ultimate travel trailer offering spacious floorplans, yet is still lightweight enough for the adventure of your dreams. In Connect SE, you'll find that exploration has all the comforts of home.

#### KEY FEATURES:

- Exterior docking station
- RV Airflow system
- OneControl moni...

### OPTIONS & EQUIPMENT

Awning 20'	Fridge with 2 doors	Heating	1 Air Conditioning Unit(s) (Ducted) - Size: 13.5	AC/DC Converter	Fully Furnished	Hide A Bed
Island Bed	Stabilizer Jacks	LPG Detector	Microwave	Monitor Panel	Outside Shower	
Power Bath Vents	Smoke Detector	Toilet Facilities	Gas/Elec Water Heater 6	Power Awning	Rear Camera Prep	
Solar Panel Prep						

Powered by focusRV