



SICARD RV

sales.leads.focusrv@sicardrv.com 1-800-688-2210

7526 Regional Road 20, West Lincoln, ON L0R 2A0

Local 1-905-957-3344 | Fax 1-905-957-7855 | www.sicardrv.com



SPECIAL UNIT

\$169,990.00

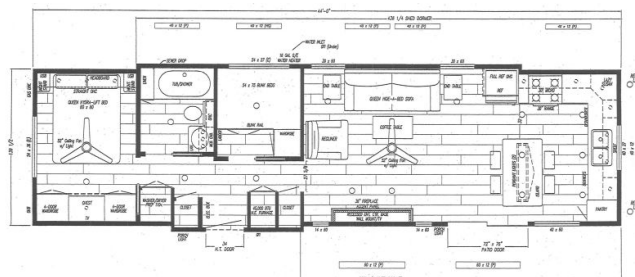
Originally \$189,990

\$784 Bi-Weekly

2023 WOODLAND PARK TIMBER RIDGE ST LAWRENCE TC-307C

SPECIFICATIONS

Year	2023
Manufacturer	WOODLAND PARK
Brand	TIMBER RIDGE
Model	ST LAWRENCE TC-307C
Type	Park Model
Status	New
Stock #	20811
Financing Available	✘
Warranty Available	✘
Suspension	N/A
Leveling	N/A
Exterior Length	44.0 ft.
Dry Weight	N/A lbs.
Sleeping Capacity	6 person(s)
Interior Colour	Cement
Exterior Colour	Granite
Slideouts	N/A



Disclaimer: Product information, pricing and photos are as accurate as possible and are subject to change without notice.

SELLING FEATURES

The 2023 Timber Ridge St. Lawrence TC-307C, by Woodland Park, is a home away from home. This park model home features bunk beds, a kitchen island with barstools & sleeps up to 6 people. All Timber Ridges are backed with a 3 year manufacturer limited factory warranty. Start enjoying everything the...

OPTIONS & EQUIPMENT

- PVC PLANK UPGRADE GESSO - MAKE BEECH
- WALLBOARD WHITE COLVILLE BEACH
- END TABLE ROUGH SAWN FARMHOUSE (2)
- COFFEE TABLE ROUGH SAWN FARMHOUSE
- HEADBOARD WOODGRAIN
- BED HYDRA LIFT QUEEN
- BUNK W/ FOAM MATTRESS, TOP RAIL & BLACK LADDER
- DRAPE SIDE PANEL ACCENT
- BLIND FAUX WOOD WHITE
- TABLE LAMP BLACK (2)
- SIDING VINYL UPGRADE GRANITE
- SHINGLES UPGRADE ARCH LIFETIME WARRANTY DUAL GRAY
- WINTERGUARD ROOF UNDERLAYMENT
- ONE ADDITIONAL CABINET COLOR - SLATE GRAY KITCHEN BASE CABINETS
- CEILING BOARD MANSION FROST
- DOOR (REAR AND PATIO) AND WINDOW COLOR WHITE
- DOOR (REAR AND PATIO) & WINDOW NO GRIDS
- DOOR REAR HOUSE TYP FIBERGLASS W/STORM AND WINDOW
- INTERNAL BLIND FOR REAR DOOR (NO GRIDS)
- DOOR PATIO THERMOPANE VINYL 6"
- WINDOW VINYL LOW-E THERMOPANE
- WINDOW TRANSOM
- INSULATION (R13 WALLS/ R21 CEILING)
- RADIANT FOIL FLOOR
- RADIANT FOIL SIDE WALLS, FRONT AND REAR
- SIDE WALL EXTENSION (PER FT) - BUNKROOM, BATH AND BEHIND REFRIGERATOR
- DORMER SHED SINGLE OVER BUNKROOM AND BATH
- LOWER FASCIA (PER FT) - DOOR SIDE
- GAS LINE TO REAR ONLY
- UNDERBELLY ALUMINUM
- HITCH DETACHABLE
- HITCH ORIENTATION STD
- AXLE 4TH
- CHANGE FRONT OF UNIT
- MOVE E/C TO D/S WALL
- LED LIGHTS IN L/R CEILING INSTALL

- INSTALL OLD STYLE KITCHEN
- INSTALL 18" PANTRY IPO CABINET IN KITCHEN D/S
- D/S KITCHEN WINDOW TO BE 40X60
- EXCHANGE FURNACE AND CLOSET IN HALLWAY
- CLOSET IN HALLWAY BESIDE W/D
- MOVE WINDOWS BEHIND SOFA
- CABINET COLOR SNOW WHITE
- CABINET DOOR HARDWOOD CHAMFER SHAKER STYLE
- CABINET HARDWARE BLACK MATTE
- CABINET DRAWER GUIDES SELF CLOSING
- CABINET DOOR WITH SOFT CLOSING HINGES
- COUNTERTOP SOLID SURFACE W/SINK AND BACKSPLASH SAN REMO-SEAMS ARE NOTICEABLE AND PATTERN MAY NOT LINE UP
- BACKSPLASH UPGRADE SUBWAY TILE IN KITCHEN GRAPHITE
- CABINET KITCHEN LAZY SUSAN IN OHC
- WINDOW SILLS VINYL THRU OUT
- CABINET KITCHEN FULL DEPTH CAB OVER FRIDGE
- CABINET KITCHEN FINISH TOPS ON OHC'S
- CHAIR RAIL THRU OUT
- TRIM AROUND ALL WINDOWS 1 3/4"
- MOLDING CROWN AROUND CABINETS - SNOW WHITE
- MOLDING INTERIOR BASE 3"
- CABINET BEDROOM STRAIGHT OHC
- CABINET BEDROOM CHEST OF DRAWERS
- VALANCE ABOVE CHEST
- CABINET BEDROOM 4 DOOR WARDROBES
- BUNKROOM WARDROBE
- NIGHTSTANDS BUILD IN W/DOOR (2)
- MANTLE TOP FIREPLACE CROSS SAWN STYLE
- CABINET ENTERTAINMENT BASE FOR 36" FIREPLACE
- BOOKSHELF
- WALL ACCENT COLOR KNOT GRAYSTONE
- CABINET BATH OVERHEAD TOILET
- CABINET BATH EXTEND LAV TOP OVER TOILET
- DOOR LOUVERED FOR FURNACE
- DOOR LOUVERED FOR W/D CLOSET
- FAUCET LAV BLACK MATTE
- FAUCET KITCHEN SINGLE HANDLE PULL DOWN BLACK MATTE
- SHOWER FIBERGLASS TUB 1 PC
- SHOWER HEAD FIXED MATTE BLACK
- TOILET RESIDENTIAL
- VALVES WATER SHUT OFF FOR STANDARD FIXTURES
- FAUCET OUTSIDE WATER - REAR END WALL NEAR DOOR SIDE
- POWER BATH VENT W/ NO LIGHT IN VENT
- CEILING FAN IN LIVING ROOM AND BEDROOM
- 50 AMP
- TV / CABLE JACK (2)
- RECEPT GFI EXTERIOR (2)
- RECEPT USB (2)
- DIMMER SWITCH PER LIGHT (ISLAND)
- LIGHT PENDANT BLACK CAGE (2)
- LIGHTS EAVE LED EXTERIOR (PR) - FRONT END
- LIGHTS LED W/DIMMER UNDER KITCHEN OHC
- LIGHTS LED W/DIMMER (3) BOTTOM OF BR OHC
- LIGHTS LED IN BEDROOM VALANCE
- LIGHTS LED IN CEILING
- LIGHT PORCH DARK BRONZE
- TV BRACKET WALL MOUNT FULL MOTION 32"-50" UP TO 80#
- TV LED 50"
- CO DETECTOR (CA)
- LP GAS DETECTOR (CA)
- FIREPLACE ELECTRIC 36"
- FURNACE 45,000 BTU HIGH EFFICIENCY
- A/C BOOT 12-2 WIRE W/SINGLE 20AMP BREAKER W/JBOX
- REFRIGERATOR FROST FREE 18 C.F. STAINLESS STEEL
- DISHWASHER 18" STAINLESS STEEL
- WASHER/DRYER PREP 110V W/CENTER SHELF
- RANGE GAS DELUXE W/ELECTRIC IGNITION STAINLESS STEEL
- WATER HEATER GAS/ELECTRIC 16 GAL W/DSI
- WATER HEATER LIGHTED SWITCH
- MICROWAVE OVER RANGE IPO STANDARD - VENT OUT SIDEWALL
- OMIT STAINLESS STEEL BACKSPLASH & RANGE HOOD
- DECOR COLOR CEMENT FURNITURE
- SOFA SLEEPER QUEEN DAWSON
- RECLINER WALL-A-WAY
- RADIANT FOIL ROOF
- SEAL CRVA - BUILD TO Z-241 CODE