



GIMME SHELTER LTD.

roger@gimmerv.com 1-888-387-8881
635605 Hwy 10, Mono, ON L9V 0Z7

Local 1-519-925-5261 | Fax 1-519-925-6187 | gimmerv.com

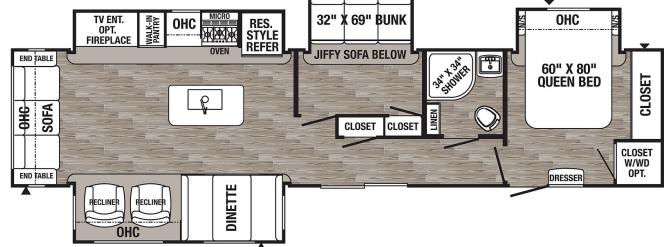


Originally \$85,631.00

2022 PALOMINO PUMA PA38RLB

SPECIFICATIONS

Year	2022
Manufacturer	PALOMINO
Brand	PUMA
Model	PA38RLB
Type	Destination Trailer
Status	New
Stock #	5523
Financing Available	✓
Warranty Available	✓
Suspension	N/A
Leveling	N/A
Exterior Length	41.7 ft.
Dry Weight	10240 lbs.
Sleeping Capacity	9 person(s)
Interior Colour	N/A
Exterior Colour	N/A
Slideouts	4



Disclaimer: Product information, pricing and photos are as accurate as possible and are subject to change without notice.

Powered by focusRV